

K75 K100 Heated Grips

Part # 61312300383

Left Grip

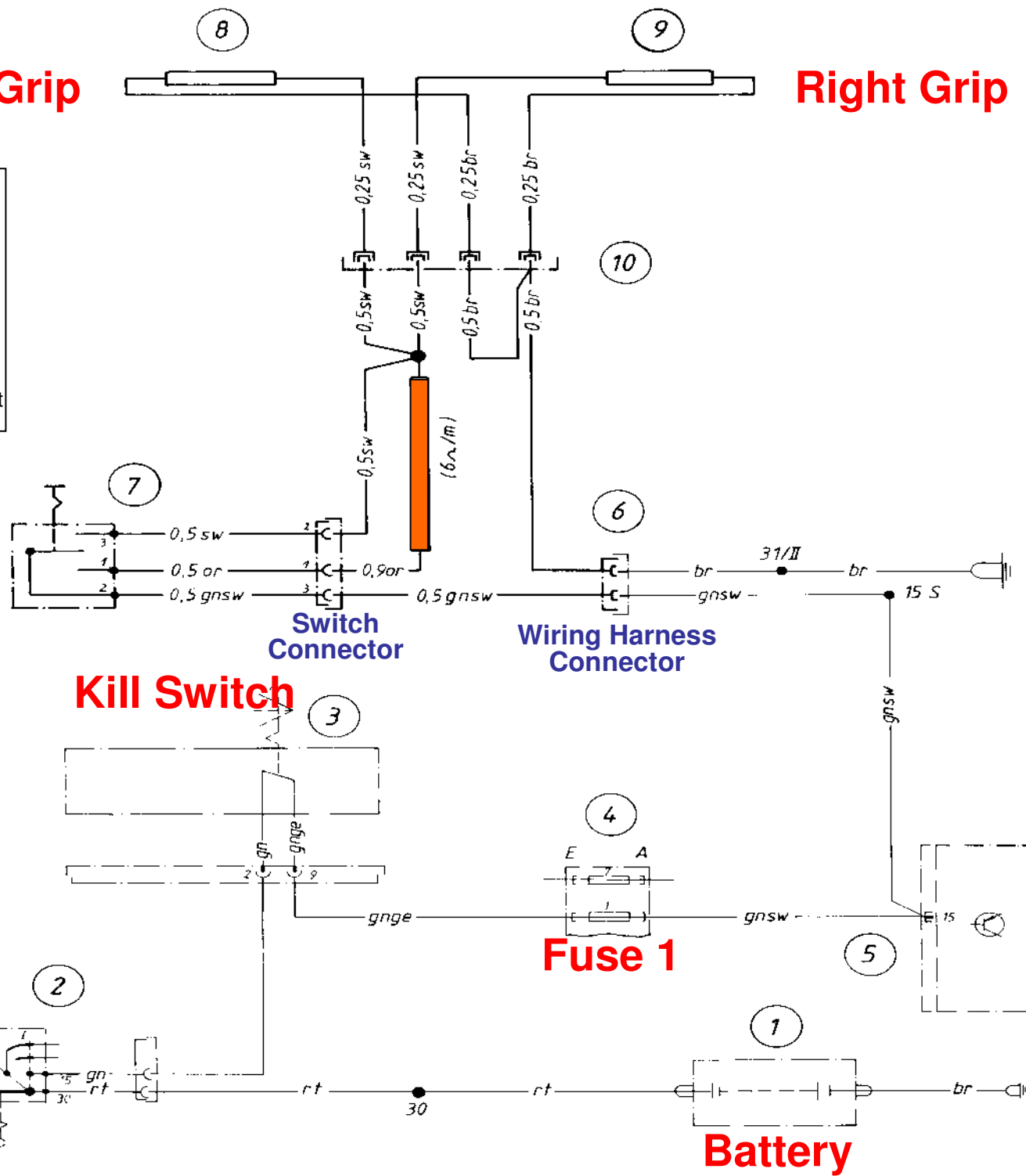
Right Grip

IMPORTANT NOTE: The low setting uses a resistive wire (orange box in this diagram) to reduce the voltage to the grips. If left on low for too long that wire can get too hot, melt its insulation and cause a short. Therefore, its advisable to only use the low setting very sparingly or not at all.

Some K owners disable the low setting by cutting the orange wire to the switch. This eliminates the potential for this short to occur.



Heated Grip Switch



Ground

Kill Switch

Ignition Switch

Fuse 1

Bulb Monitor Unit

Battery

Ground

K 100, K 100 RT
ab 2.85
1459 422.2

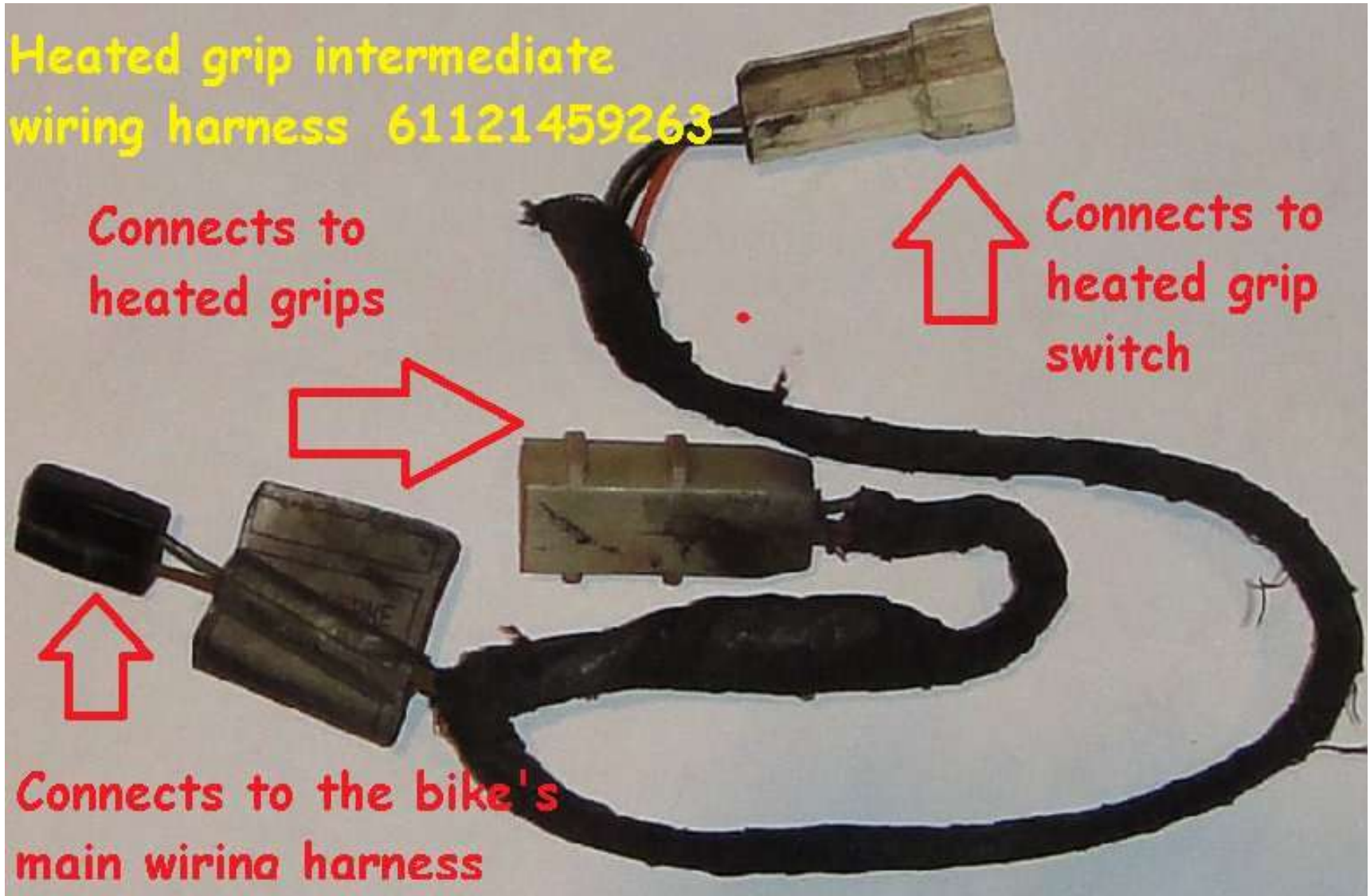
BMW Heated Grip Intermediate Wiring Harness Part 61121459263

Heated grip intermediate
wiring harness 61121459263

Connects to
heated grips

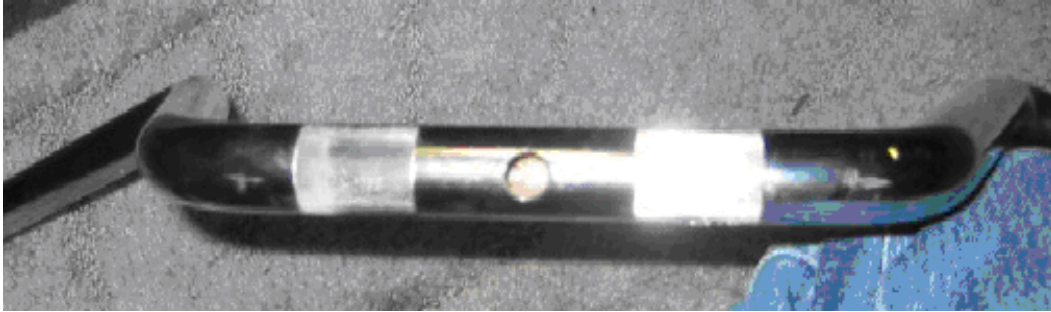
Connects to
heated grip
switch

Connects to the bike's
main wiring harness

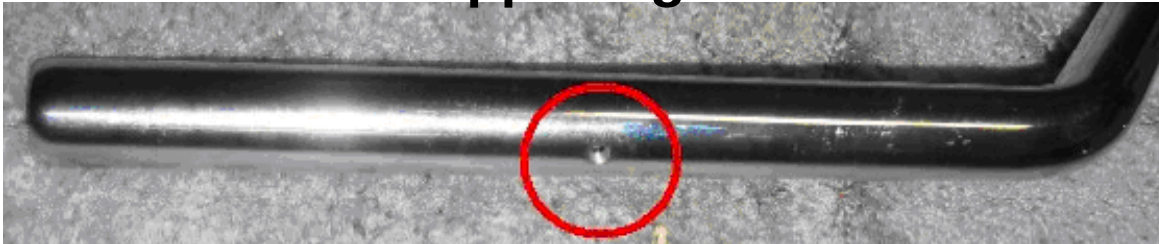


BMW Heated Grip Handlebars

Wiring passes through hole in center front of bars



Clutch side has opposing M4 holes for clutch side HG tube



Clutch side HG tube is held on by two flat M4 screws

